



**Feel  
safe  
inside.**





**SUPASCREEN®**



**Feel  
safe  
inside.**

## Lets the fresh air in but that's all.

Supascreen® offers the comfort of fresh air flowing through your home allowing you to enjoy clear and unobstructed views of the outdoors.

The strength and durability of Supascreen® security door and window screens offer the peace of mind that comes from knowing your family and home are secure.

Made from high tensile stainless steel, woven into a fine mesh, Supascreen® is a modern innovation in security products technology. It maximises strength and durability, whilst providing a welcoming entrance to your home.

Supascreen® is assembled using a unique patented pressure process that eliminates the need for screws, rivets, pins or snap ins. The process ensures that no dissimilar metal surfaces come into contact with the mesh, thus eliminating this as a possible cause of corrosion.

Supascreen® is covered by a ten year warranty.



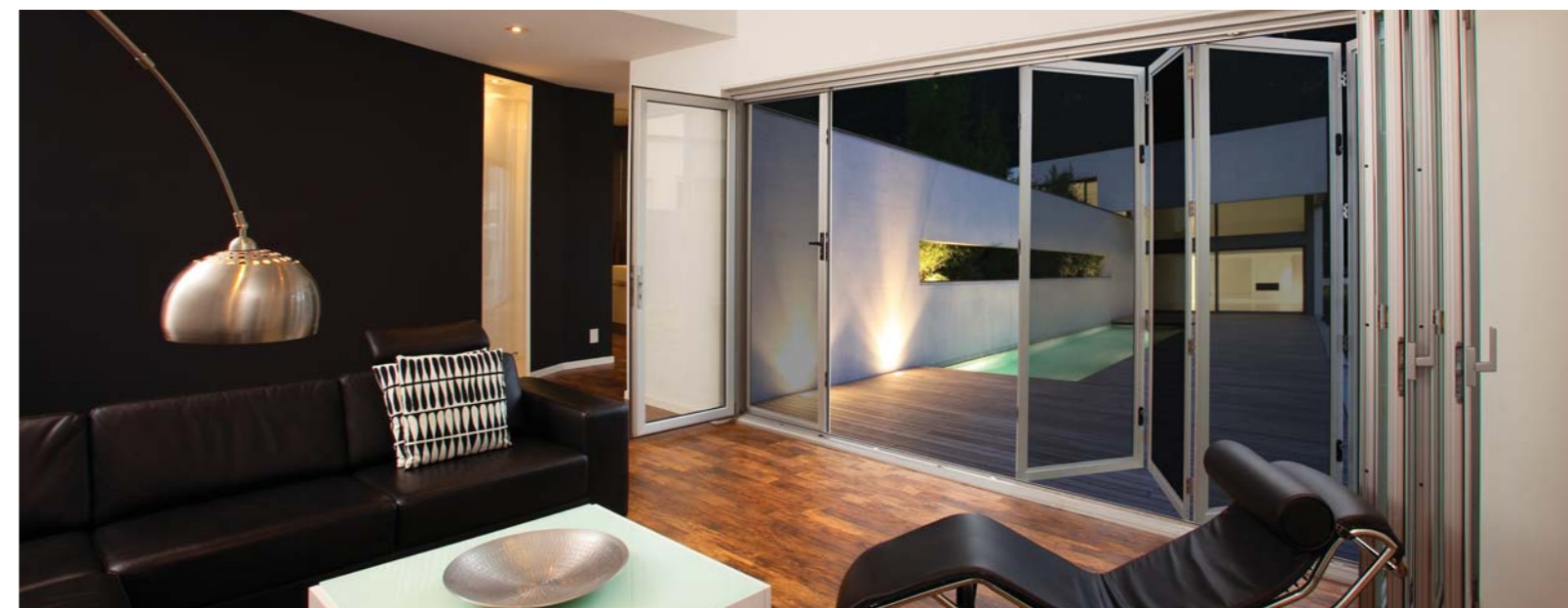


## Innovative design that offers comfort and security



The Supascreen® Folding Door by Amplimesh® is a revolutionary new product that offers all the comfort of a traditional Supascreen® product, whilst being capable of securing large openings including existing glass folding doors and patio enclosures. Tested to Australian Standards AS5041-2003 & AS5039-2008, you will feel safe inside. You can now have peace of mind whilst enjoying insect free security and a fresh breeze in your alfresco dining area.

Compromises between large openings and security ends now with this purpose designed system which can be retrofitted to existing folding doors or installed as a standalone security door or patio enclosure. The suite incorporates the patented



stainless steel mesh system and a new heavy duty security frame for improved strength. The multiple panel system can be configured to open in or out and will span heights up to 2.4 metres and widths up to 6.5 metres (8 panels).

The stainless steel hinge design has been developed to provide streamlined aesthetics, allowing the panels to stack side-by-side when open. An exclusively designed flush bolt enables the door panels to be closed securely.

**SUPASCREEN®**

# Breakthrough protection for your family and home

As more and more households are falling victim to attempted break-ins, you can't go past SecuraMesh® doors and windows. And while the chance of attempted burglary is high, you can significantly reduce the likelihood of having your personal property invaded by installing superior SecuraMesh® products.

Protect your home and family with quality SecuraMesh® grille security door and window screens, that provide a visual deterrent and effective protection against uninvited guests entering your home. SecuraMesh's variety of grille designs and frames suit the demands for both barrier and security doors.

SecuraMesh® security grilles are available in a variety of styles and powdercoat colours to suit your home décor requirements.



Grille Design 122



Grille Design 125



Grille Design 127



Grille Design 133



## Your safety checklist

For your piece of mind, there are some measures you can take to improve the security of your home and *feel safe inside*.

- Fit Amplimesh® SupaScreen or SecuraMesh screens to all accessible windows
- Fit Amplimesh® SupaScreen or SecuraMesh screen to entrance, sliding and patio doors
- Fit key-operated deadlocks to external hinged doors
- Fit key-operated patio bolts to all external sliding doors



## Hard to break in, easy to break out

Feel safe, even in emergency situations. The SupaScape™ fire egress system has been designed and tested to prevent unwanted visitors from entering your home via the windows, but provides you and your family with an escape path in the event of a fire or other critical situations that may arise in your home.

The SupaScape™ fire egress system is a window screen that comes with an open outward capability or with sliding functionality to allow for exit in the event of an emergency.

The slim-line keyless design is available in stainless steel mesh and aluminium grille. All SupaScape™ systems are designed to allow you to gain access to the glass for ease of cleaning.



The SupaScape™ fire egress system has an outward opening functionality. Top Hung option shown.



Spring loaded release handle allowing rapid operation in urgent situations



Top Hung



Side Hung



Sliding





## History

Amplimesh® has been a cornerstone of residential security products since the 1970s and is recognised by many as the benchmark in aluminium and stainless steel security systems. It's easy to see why over the last 40 years, more than a million Australians have chosen Amplimesh® to secure their homes.

## Care and Maintenance

The finishes that are applied to Amplimesh® products are of the highest quality and are extremely durable and weather resistant. Like all fixtures around the home some maintenance is required to preserve the original appearance of the product.

## Australian Standards

Amplimesh® security products are rigorously tested to ensure they meet relevant Australian and industry standards including:

### SECURITY



#### Australian Standard AS5039-2008 & AS5041-2003 – Security Testing

Amplimesh® products are subjected to a rigorous regime of impact tests, jemmy attacks and pull testing under this standard, to ensure that the inherent strength and structural integrity of the manufactured security product is maintained.



#### Australian Standard AS5039-2008 & AS5041-2003 – Grille Shear Test

SecuraMesh® Grilles are tested for material hardness under this standard, to ensure the force required to sever the cords of SecuraMesh® grilles meet or exceed the requirements of the standard.



#### Australian Standard AS5039-2008 & AS5041-2003 – Knife Shear Test

SupaScreen® stainless steel meshes are tested for material hardness and tensile strength by subjecting the mesh to a standardised physical cutting attack, which draws a knife over the mesh a number of times.

### FIRE



#### Australian Standard AS1530.4-2005, Appendix B7 – Fire Attenuation Test

SupaScreen® stainless steel security products have been tested in general accordance with this standard and when exposed to incident radiant heat SupaScreen® achieves a 41% reduction in the radiant heat flux between the inside and outside of the product.



#### Australian Standard AS1530.8.1-2007 – Bushfire Test

SupaScreen® stainless steel security products have been tested under this standard and satisfied the requirements for bushfire attack Level (BAL) 40.

### CYCLONIC



#### Australian Standard AS1170.2-2002, Clause 5.3.2 – Cyclonic Missile Impacts

In cyclonic regions windows and doors may need to be protected from flying debris. SupaScreen® stainless steel security products have been tested to this standard, resisting the 4kg, 100mm x 50mm timber travelling at 15 metres per second (m/s).



#### Australian Standard AS1170.2-1989 – Cyclonic Missile Impacts

QLD Government, Design Guidelines for Aust. Public Cyclone Shelters, 2002. Department of Health, Western Australia Health Facility Guidelines for Engineering Services, 2006. SupaScreen® stainless steel security products have also been tested to and satisfied the more onerous testing regime of this standard. The same piece of timber is impacted into the screen at the faster speed of 20m/s followed by 8mm steel balls at 30m/s followed by fatigue testing.

Contact your local authorised Amplimesh® dealer

**1800 Amplimesh • 1800 267 546**

[www.amplimesh.com.au](http://www.amplimesh.com.au)

**SUPASCREEN**

**10 YEAR WARRANTY**

Amplimesh® SupaScreen®  
SecuraMesh® and SupaScape™ are  
trademarks of Capral Limited.

Amplimesh® Security Products  
are sold through a network of  
authorised Amplimesh® dealers  
managed by Capral Limited.

ABN 78 004 213 692.